

Welcome to Ar Metal San. ve Tic.Ltd.Şti. Kocaeli, Turkey



Factory – 1

Factory – 1 **9.500 m² covered area +15.000 m² opened area with crane**
Workshop (8000 m²)
1000 m² office buildings
Overhead crane : 5 tons...9 pcs.
 : 7,5tons...2 pcs.
 : 10 tons...4 pcs.
 : 15 tons...9 pcs.
 : 25 tons...2 pcs.
 : 35 tons...1 pcs.





Factory – 2 **7.200 m² covered area +5.000 m² opened area**
Workshop (6000 m²)
1200 m² office buildings
Overhead crane : 10 tons...2 pcs.
 : 20 tons...2 pcs.
 : 32 tons...2 pcs.

Company

Founded

1972 (KOLL.)/1994 (LTD)

Production Capacity

**43,722 tons per year / 24 Hours per day-3 Shifts
3,644 tons per month**

Storage Capacity

approx. 3,000 tons

Workforce

approx. 275 (own)+ 67 (external)

Certification

**DIN EN ISO 9001:2008
DIN EN ISO 3834-2
OHSAS 18001
DIN 18800-7:2002-09 Class E**

Prefab parts

up to 100 tons, max. size 12 x 30 x 3 m

Transport connections

shipload, road, railway

Scope of Work

Design

Planning Design
Construction Design
Statically Calculation (Structural Analysis)
Overview drawings and plans
Workshop drawings and plans

Production

Work Preparation
Surface Preparation
Mechanical Treatment/ Cutting
Assembly
Welding
Post-production Surface Preparation (Treatment)

Erection

Transport
On-site erection





Product Groups



Industrial buildings



Power stations



Sport centers



Logistics



School and Hospital buildings



Parking garages



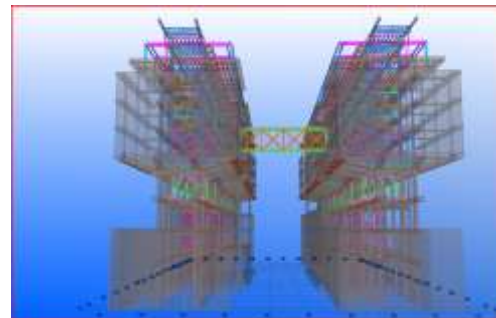
Shopping centers



Bridges



Storage Tanks

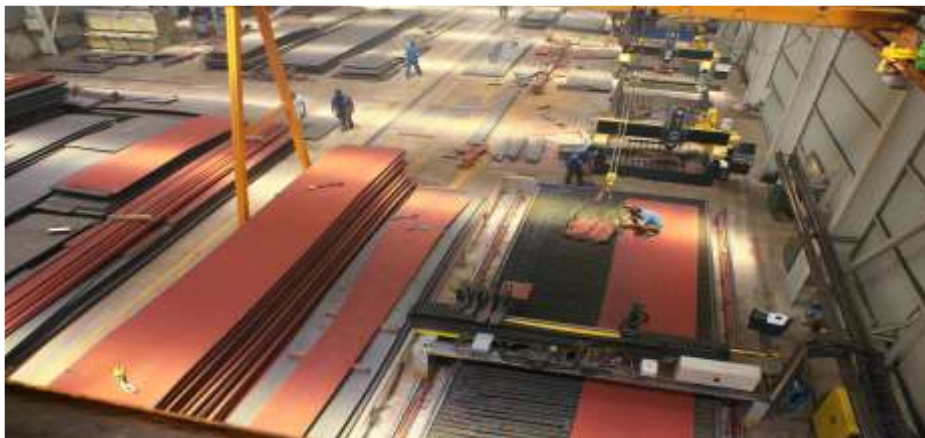


Multi Storey Structures

Design



Material Stock Area



Sand blasting machine



Painting





Cutting machine – 1



CNC Plasma and Oxy Cutting



- 4.500* 16.000 (width*length)
- Precision Plasma 260 Amper Generator
- Automatic Torch Height Control
- 1 X 5 Head Oxy Plasma Cutting and 1 Head Plasma Cutting

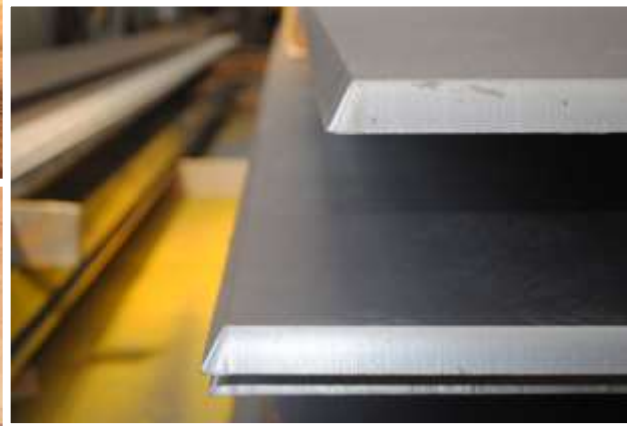


Cutting machine – 2



- 4.500*30.000 (width*length)
- Precision Plasma 260 Amp.
- Marking
- 2 X Two-head Plasma Cutting + One-head Oxy-cutting + Bevel Cutting



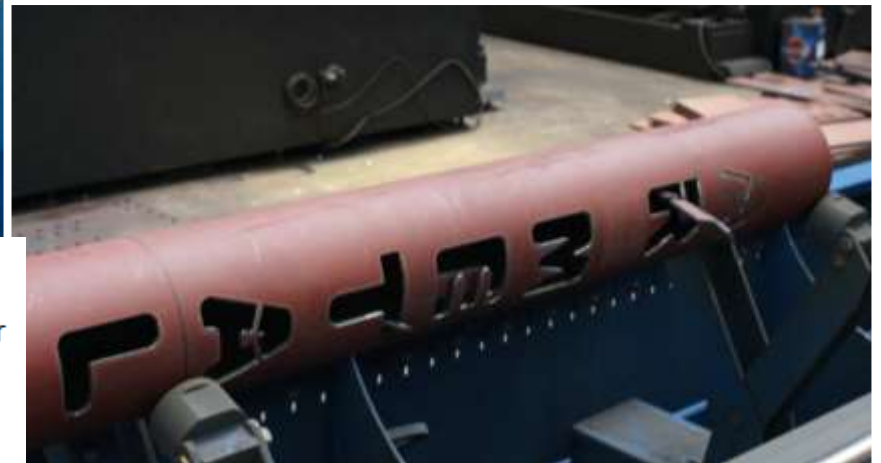


AJAN CNC plasma cutting and drilling machine.Dimension:16.000x3.500x40-200 mm/4 plasma - 4 oxygen torch + Bevel cut

Pipe Cutting machine



- 12 m Length * Thickness 32 mm
- Precision Plasma 260 Amper Generator
- Marking
- Automatic Torch Height Control



Sawing machine- 8 pcs.



TECHNICAL DETAILS

Parameter	Unit	Value
Round Cutting Capacity	mm	1100
Flat Cutting Capacity	mm	1100 x 1300
Square Cutting Capacity	mm	1100

Milling and Drilling machine (H : 800 x W : 2500 x L : 16.000) 2 heads



CNC Profile Drilling Sawing Marking machine - 1



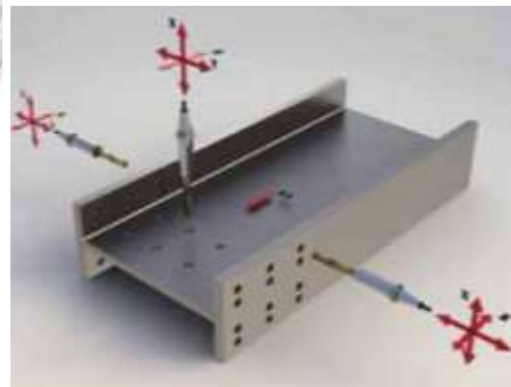
Akyapak CNC Triaxial drilling ,cutting , marking machine.Dimension: H : 500 x W : 1.000 x L :20.000





CNC Profile Drilling Sawing Marking machine - 2

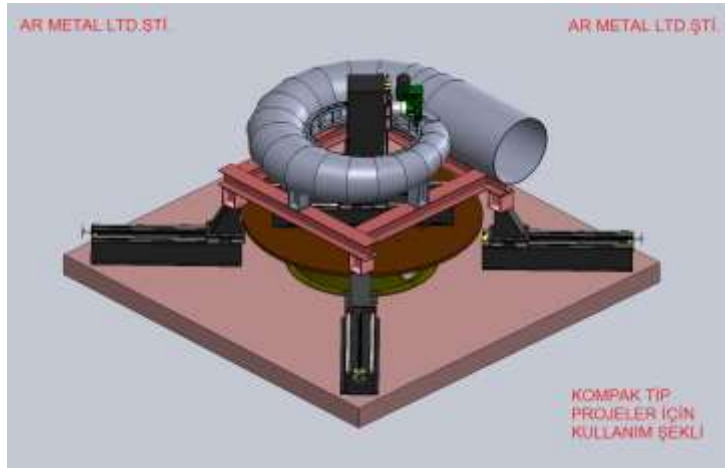
Akyapak CNC Tri-axial drilling ,cutting , marking machine. Dimension :H : 800 x W : 1.800 x L :20.000





Ar Metal Post Weld Heat Treatment . Dimension: 6.500 x 15.000 x 4.500 mm

CNC Vertical Lathe Machine (Designed by Ar Metal)



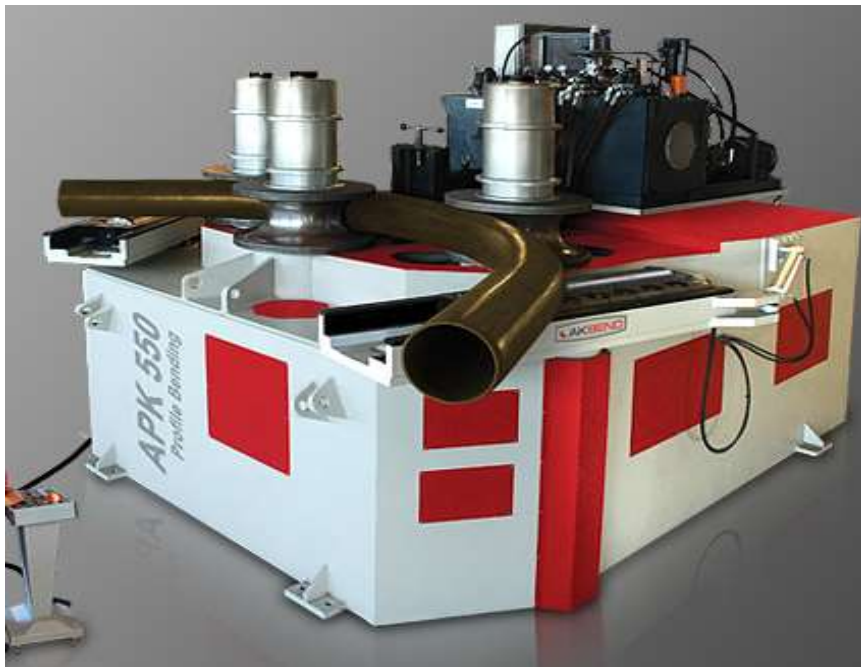
Hydraulic Conveyor Beam-Column Build-up machine



Hydraulic Conveyor Beam-Column Build-up machine. Dimension: 400 x 4.000 mm/200-800/8-60



**4 ROLLS HYDRAULIC PLATE
ROLLING MACHINES -1**
#40 x 3100 mm



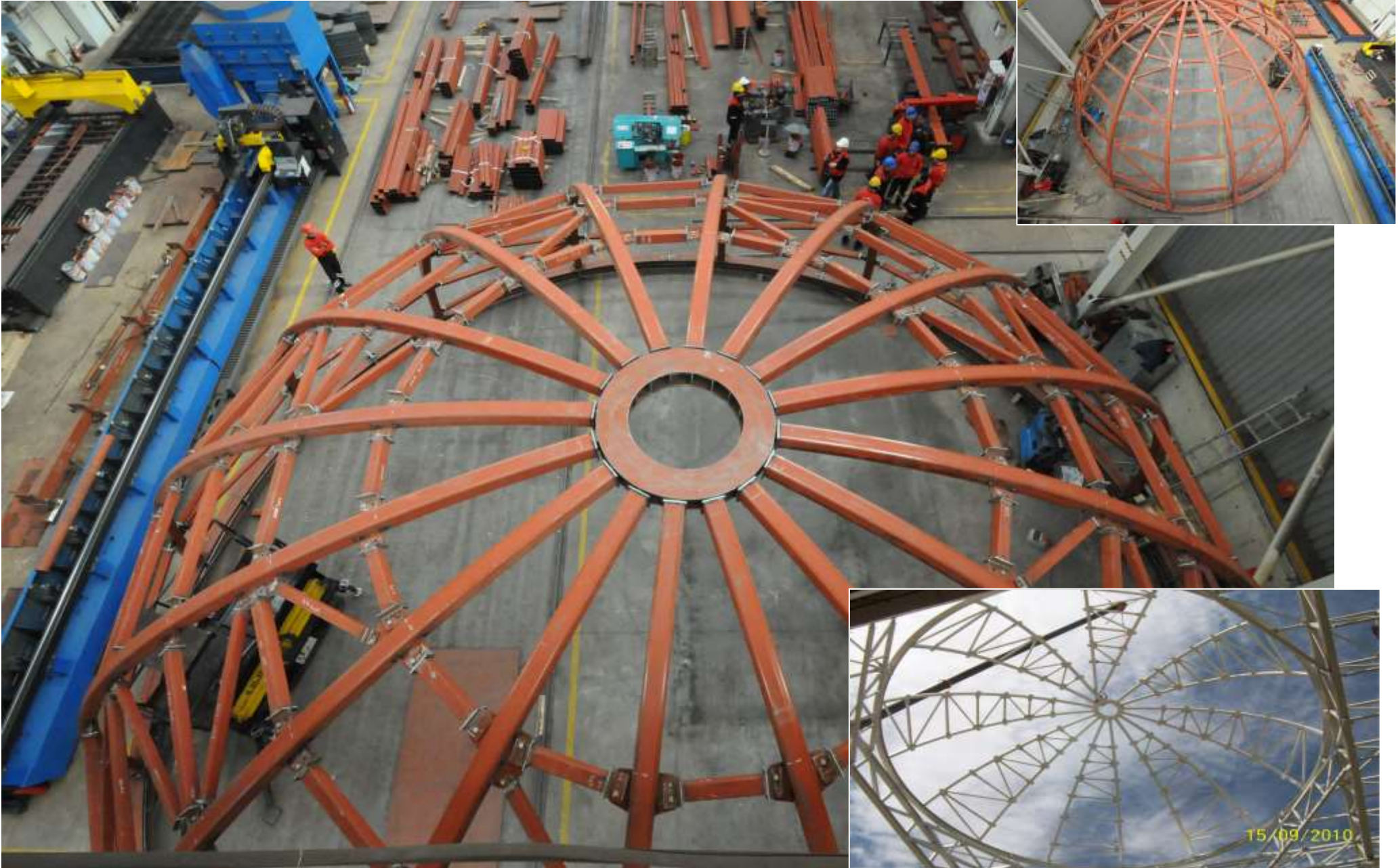
PIPE BENDING MACHINE



**4 ROLLS HYDRAULIC PLATE
ROLLING MACHINES -2**
#30 x 2100 mm







Quality Control





Submerged Arc Welding Line





Painting



Assembly



PRESSURE VESSELS



STORAGE TANKS



Multi-Storey Structures





LEBANESE UNIVERSITY



ÇİFTÇİ TOWERS





SHERATON HOTEL ADANA



HYDRO EQUIPMENT



ALSTOM

ANDRITZ











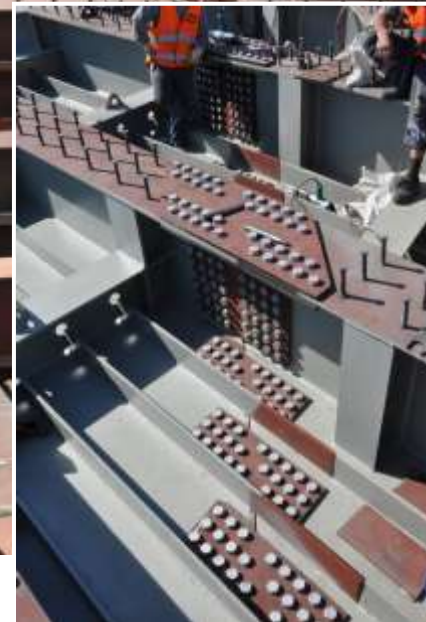
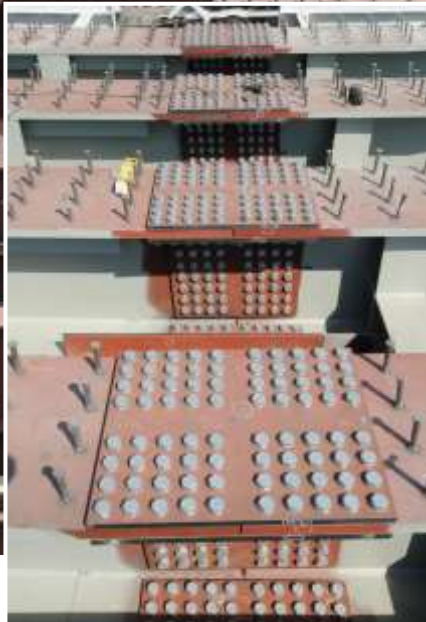


IZMIT YENIDOĞAN HOSPITAL BRIDGE









EDIRNE KAPI BRIDGE

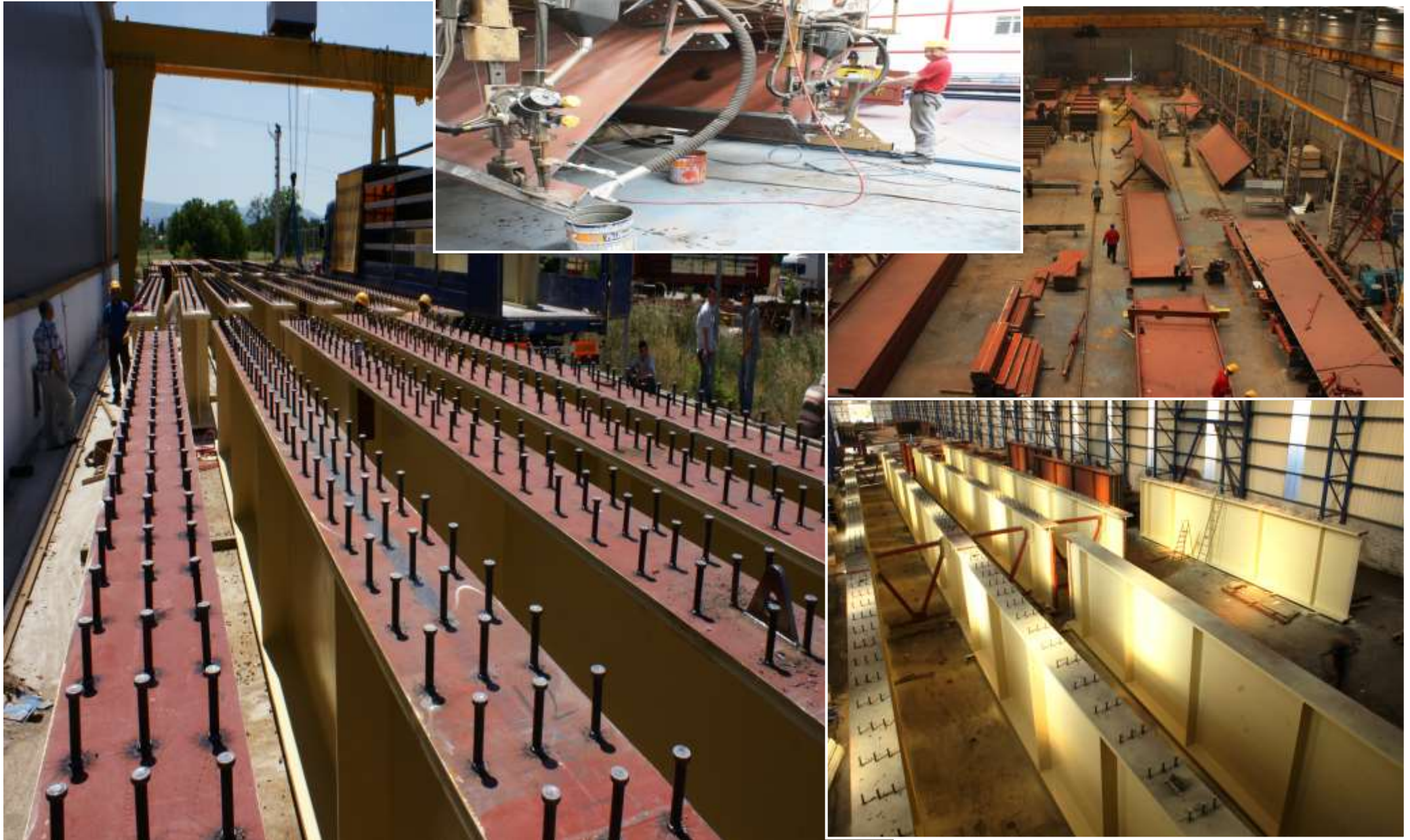


**MELEN PIPE SUPPORT
BRIDGE**



AFGHANISTAN KESHIM FAIZABAD BRIDGE





BAKU AIRPORT BINE BRIDGE















GEORGIA LIAKVIA BRIDGE



IZMIT YAHYAKAPTAN ACCESS BRIDGE



BAKU MARDEKAN BRIDGE







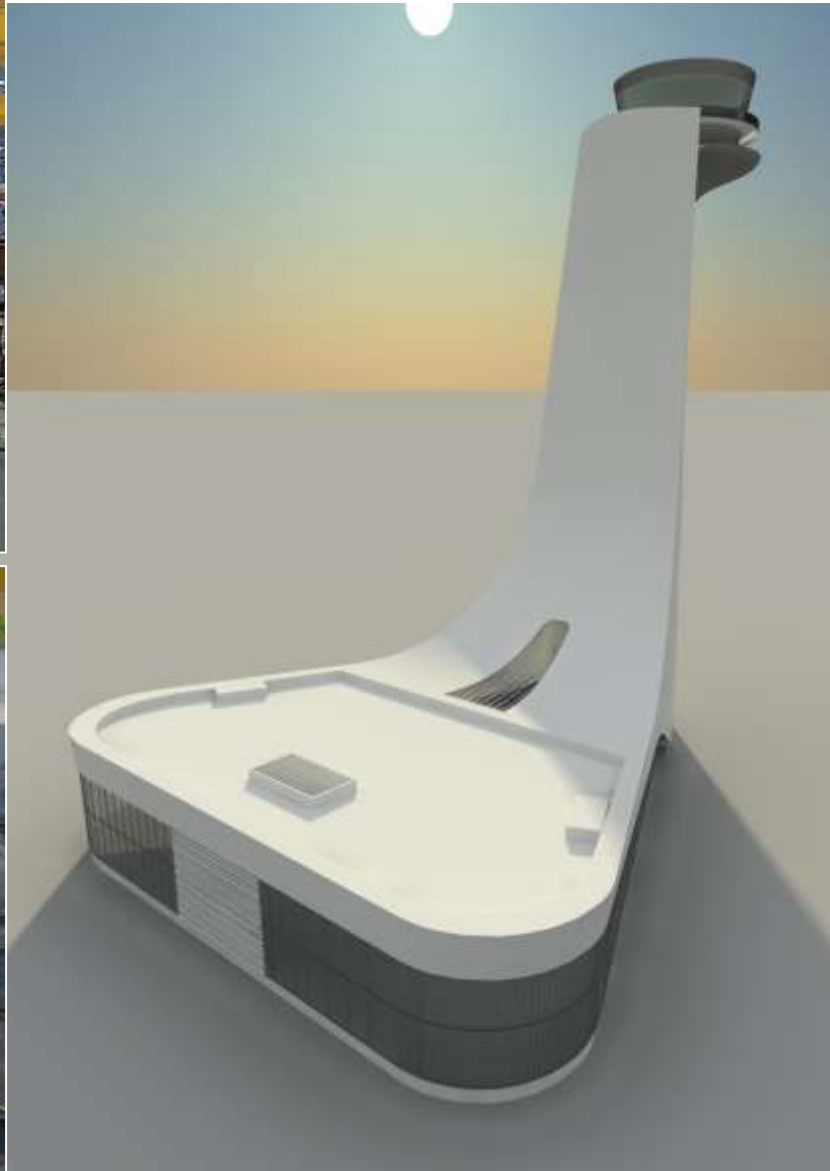
YILDIZ ENTEGRE MANISA PRODUCTION FACILITY







BAKU HEYDAR ALIYEV AIRPORT AIR TRAFFIC CONTROL TOWER



Stone Quarry Facility



COMPANY INFORMATION:

Crushed Stone Production Capacity: 10.000 Tons / Day

Backfill Material Production Capacity: 10.000 Tons / Day

Land Area: 700 Hectare

Office Building: 300m²

Distance: 7,5 km to İzmit Merkez and 0,5km to Posco Assan TST



Antimony Mining Plants



